
Outline of the Danube River Basin District Management Plan



Part A – Basin-wide overview Report on the DRBM Plan and its Joint Programme of Measures to support the EU WFD public consultation process

Document Number: IC/WD/370
Document version : FINAL
11.12.2008

//// Deutschland //// Österreich //// Česká republika //// Slovensko //// Magyarország //// Slovenija //// Hrvatska //// Bosna i Hercegovina //// Srbija //// Crna Gora //// România //// България //// Moldova ////

Imprint

This document was prepared
in the frame of the ICPDR River Basin Management Expert Group.

Editor: Birgit Vogel

© ICPDR 2008

Contact

ICPDR Secretariat

Vienna International Centre / D0412

P.O. Box 500 / 1400 Vienna / Austria

T: +43 (1) 26060-5738 / F: +43 (1) 26060-5895

icpdr@unvienna.org / www.icpdr.org

List of Acronyms

DRB	Danube River Basin
DRBD	Danube River Basin District
DRBM Plan	Danube River Basin Management Plan
DRPC	Danube River Protection Convention
EG	Expert Group
EU MS	European Union Member State
EU WFD	European Water Framework Directive
ICPDR	International Commission for the Protection of the Danube River
JAP	Joint Action Programme
JPM	Joint Programme of Measures
MS	Member State
PoM	Programme of Measures
RBM	River Basin Management
RBM EG	River Basin Management Expert Group
SWMI	Significant Water Management Issue

TABLE OF CONTENTS

- 1. Introduction**
- 2. Development of the DRBM Plan**
 - 2.1 The Danube River Basin District
 - 2.2 Guiding documents and the Danube Basin Analysis – basis for the DRBM Plan
 - 2.3 Coordination mechanisms
 - 2.4 Frame and overall structure of the DRBM Plan
 - 2.5 Significant Water Management Issues of the DRBD
 - 2.6 The Danube River Basin-wide scale
 - 2.7 The Joint Programme of Measures
- 3. Structure of the DRBM Plan**
- 4. DRBM Plan timeline, public consultation and status of the draft DRBM Plan**
 - 4.1 Milestones toward the final DRBM Plan/JPM
 - 4.2 Public consultation for the DRBM Plan/JPM
 - 4.3 Status of the draft DRBM Plan/JPM as of December 2008 and key issues as part of the draft DRBM Plan mid-May 2009
- 5. Further information on national RBM Plans and the DRBD**
 - 5.1 List of competent authorities of the Danube States and weblinks for RBM Plans/PoMs
- 6. Annexes**

1. Introduction

According to the EU WFD the River Basin Management Plan for the DRBD will be finalised by December 2009. Article 14 of the WFD foresees that the EU Member States organise a public consultation process for the Draft DRBM Plan between December 2008 and June 2009.

This document supports the EU WFD public consultation process at the national level for all Danube countries regarding the basin-wide perspective on the Danube River Basin. Therefore, this document outlines the DRBM Plan, its overall structure and table of contents, the DRB Significant Water Management Issues, the relevance of the Danube basin-wide scale and the Plan's timeline. It also reflects on the current preparation status until its finalisation at the end of 2009. Given the data availability in the DRB and as agreed by the Danube countries, a comprehensive draft of the DRBM Plan (Part A – Basin Wide Overview) will be available for public consultation in the time period between mid-May 2009 and end-June 2009.

The legal as well as political framework for cooperation and transboundary river basin management in the Danube River Basin are: the Danube River Protection Convention, which was signed 1994 in Sofia and entered into force in 1998¹, and the Danube Declaration, which was adopted by the Ministers of the Contracting Parties in 2004¹. All Danube countries with territories > 2.000 km² in the Danube River Basin are Contracting Parties to the DRPC: Austria, Bosnia and Herzegovina, Bulgaria, Croatia, the Czech Republic, Germany, Hungary, Moldova, Montenegro, Romania, the Republic of Serbia, the Slovak Republic, Slovenia and Ukraine. In addition, the European Community is a Contracting Party.

When the EU Water Framework Directive (2000/60/EC) was adopted in October 2000, the countries cooperating under the Danube River Protection Convention decided to make all efforts to implement the Water Framework Directive throughout the entire basin. In accordance with WFD Article 13 - which requires that Member States *shall ensure coordination with the aim of producing a single international river basin management plan* - the Danube countries aim for a Danube River Basin Management Plan² by 2009 entailing national and agreed measures of basin-wide importance as well as setting the framework for more detailed plans at the sub-basin or national level. The International Commission for the Protection of the Danube River (ICPDR) is the coordinating platform for compiling multilateral and basin-wide issues at the Roof-Level³ of the DRB and facilitates the compilation of this Danube River Basin Management Plan.

The DRBM Plan and the Joint Programme of Measures – an integral part of the DRBM Plan – therefore follow the requirements of the EU WFD and aim for the achievement of the respective environmental objectives.

¹ See: www.icpdr.org

² The Danube River Basin District has been defined in the frame of the work of the ICPDR. It covers 1) the Danube River Basin, 2) the Black Sea coastal catchments on Romanian territory, and 3) the Black Sea coastal waters along the Romanian coast and partly the Ukrainian coast. The River Basin Management Plan will be developed for this entire Danube River Basin District. However, in this text and as a simplification the *Danube River Basin District Management Plan* (DRBDM Plan) is always cited as *the Danube River Basin Management Plan* (DRBM Plan).

³ On the roof level (Part A) the ICPDR agreed on common criteria for the analysis related to the DRBM Plan as the basis of a common ground to address transboundary water management issues. The level of detail of the roof part A is lower than in the national part B RBM Plans of each EU MS.

2. Development of the DRBM Plan

2.1. The Danube River Basin District

The Danube River Basin is the second largest river basin of Europe, covering an area of 801,463 km² and the territories of 19 countries. Those 14 countries with territories greater than 2,000 km² within the Danube River Basin are joined in the framework of the ICPDR.

The compilation and implementation of the DRBM Plan for the Danube River Basin District (DRBD) is a particular challenge due to many facts which are different in comparison with other European river basins. Currently not all DRB countries are EU Members and these are not obliged to fulfil the WFD. One of the 14 Danube states (HR) carries the status of an EU Accession Country whereas five other countries (BS, MD, ME, RS, UA) are Non-EU Member States. Nonetheless, the Non-EU Member States and the Accession Country committed themselves to implement the EU WFD within the frame of the DRPC.

The DRBD is not only characterised by its size and large number of countries but also by its diverse landscapes and major socio-economic differences which vary significantly between the upstream and downstream countries. The prosperity in the countries of the upper Danube is higher than in the countries of the lower basin. This economic situation affects issues related to water management including, for example, the technical development and standard of wastewater treatment as well as negative impacts on the water quality of DRB water bodies due to different drivers/pressures.

The Danube River is the major tributary to the Black Sea and contributes significantly to its sources of eutrophication and pollution. In order to improve the situation in both the waters of the DRBD and the Black Sea as well, as to meet the requirements of European water policy, additional measures have to be taken in the future and will be part of the DRBM Plan.

In view of the large differences and particularities in the basin (see above), it was necessary to develop a realistic perspective of how to develop the Danube River Basin Management Plan and maximise efficiency. The DRBM Plan at the ICPDR level is modelled on the successful preparation of the Danube Basin Analysis 2004 where Part A (Roof Part) responded to the needs of basin-wide importance. In addition, Danube River Basin management is based on analyses at the national level and/or the international sub-basin scale (Part B) such as performed for the Tisza, Sava and Prut river basins and the Danube Delta.

2.2. Guiding documents and the Danube Basin Analysis – basis for the DRBM Plan

Several *guiding documents* have been developed by the ICPDR to serve the coordination of the whole process including a respective strategy for the development of the DRBM Plan (ICPDR Document IC/WD/101) and a corresponding Road Map/Work Plan (ICPDR Document 110). The Significant Water Management Issues Document (ICPDR Document IC/WD/268) served as the first outline of the DRBM Plan/JPM and was based on specific issue papers related to the four DRB Significant Water Management Issues. The document describes the overall scope of the DRBM Plan/JPM as well as the

approach for how to achieve it. All guiding documents supported the achievement of a common understanding and approach towards the DRBM Plan.⁴

The *Danube River Basin Analysis for the DRBD* (Part A) reports the requirements under WFD Article 5, Annexes II and III, and Article 6, Annex IV and was submitted to the European Commission in March 2005 through the ICPDR. The Analysis was a very important milestone within the WFD implementation process and the basis for further steps toward the final DRBM Plan. The final compilation of the DRBM Plan includes the task to fill the gaps and update the findings of the Danube Basin Analysis.

Another important milestone that supports the preparation of the DRBM Plan is the Joint Danube Survey 2 (JDS2), a research expedition on the Danube that was carried out by the ICPDR in 2007. The results of the JDS2 are available at www.icpdr.org/jds2 and will supplement the findings of the Danube River Basin Analysis 2004 and the national data for the DRBM Plan.

2.3. Coordination mechanisms

Appropriate *coordination mechanisms* in the DRB enable transboundary cooperation and ensure the development of the DRBM Plan on the basin-wide level. In general, three different levels of coordination are distinguished in the DRB – the Danube River Basin level, the bilateral/multilateral level and the national level. Figure 1 describes the role of the International Commission for the Protection of the Danube River (ICPDR) as the facilitating, coordinating and communicating organisation between the different Danube countries. Where the boundaries of the Danube River Basin District extend beyond the national borders of the countries cooperating under the DRPC (e.g. into Italy or Poland), it is the responsibility of the respective neighbouring countries to find an appropriate form of coordination with the relevant neighbours (see also Figure 2).

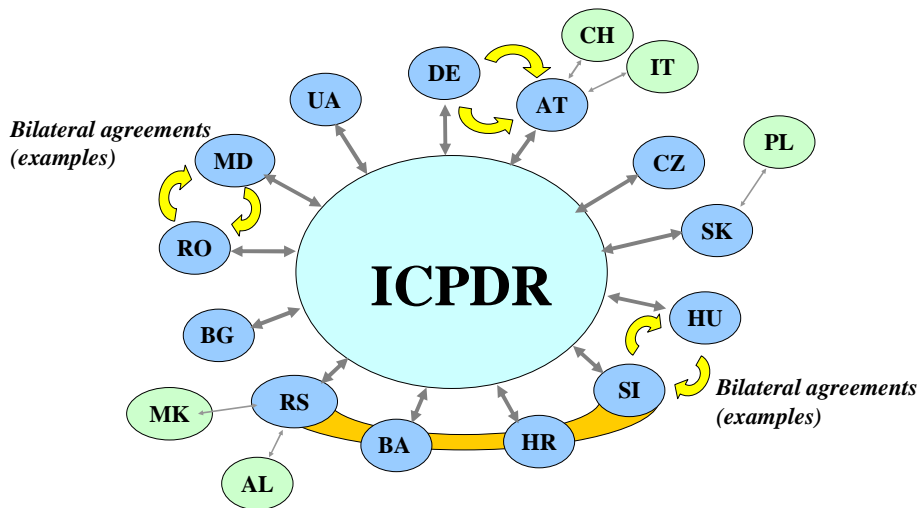


Figure 1: Coordination mechanisms in the Danube River Basin.

⁴ All cited guiding ICPDR documents are available on the ICPDR website: www.icpdr.org

2.4. Frame and overall structure of the DRBM Plan

The DRBM Plan is being developed for the Danube River Basin District (see **Map 1**). The DRBD covers 1) the Danube River Basin, 2) the Black Sea coastal catchments on Romanian territory, and 3) the Black Sea coastal waters along the Romanian coast and partly the Ukrainian coast.

River basin management plans and programmes of measures according to the WFD are developed on three scales in the DRBD, which are the:

1. International level (Part A)
2. National level (Part B) and/or internationally coordinated sub-basin level (Part B) for selected sub-basins (Tisza, Sava, Prut, Danube Delta); and, in addition, the
3. Sub-unit level (Part C).

As outlined in the strategic document on the *Development of the Danube River Basin District Management Plan* (ICPDR document 101)⁴ the information increases in detail from Part A to Part B and C (see **Figure 2**). The content of the DRBM Plan at the A level is strongly based on findings and actions from the national/sub-basin level. So far, the Danube countries agreed to develop sub-basin management plans for the Danube Delta, and the Tisza⁵, Sava and Prut basins. The interrelation between the different levels is manifold and is exploited in the best possible way to achieve the objectives on all levels in the most efficient way.

The EU WFD defines four phases with specific tasks and deadlines for the implementation process:

PHASE I: Definition of river basin districts, and definition of the institutional frame and mechanisms for coordination (until December 2003).

PHASE II: Analyses of river basin characteristics, pressures and impacts, economic analysis, and establishment of the register of protected areas (until December 2004).

PHASE III: Development of monitoring networks and programmes (until December 2006).

PHASE IV: Development of the Danube River Basin Management Plan including the Joint Programme of Measures (JPM) and public participation/consultation (until December 2009/March 2010).

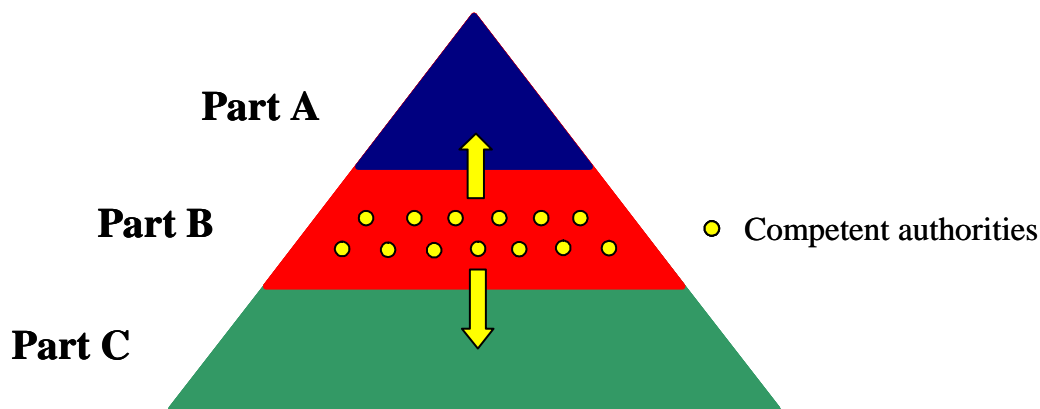


Figure 2: Structure of the DRBM Plan.

⁵ The Tisza RBM Plan is intended to be finalised in parallel with the DRBM Plan.

2.5. Significant Water Management Issues of the DRBD

The Danube Basin Analysis 2004 enabled the identification of the Significant Water Management Issues in the Danube River Basin District:

1. Pollution by organic substances
2. Pollution by nutrients
3. Pollution by hazardous substances
4. Hydromorphological alterations
5. Alterations regarding the quantity and quality of transboundary groundwater bodies

The DRBM Plan and JPM will clearly focus on those SWMIs. Within the DRBM Plan the identified significant pressures, status information and the JPM will refer individually to each SWMI. The SWMIs will take a pillar role within the Plan/JPM and are therefore those management issues for which measures will be defined as part of the JPM. However, in addition, investigations have been and will be still undertaken to identify other relevant issues and their significance at the basin-wide scale such as climate change, flood/drought events⁶ and changes in sediment quality/quantity. The DRBM Plan will include the first step toward the inter-linkage of flood management, flood protection measures and measures to achieve the objectives of the EU Water Framework Directive.

2.6. The Danube River basin-wide scale

The DRBM Plan follows the principle of the basin-district-wide⁷ approach, as there are many added values of an international RBM Plan. On the Danube basin-wide scale, several cross-cutting issues could be identified for all of the SWMIs related to surface waters and groundwater, and these form the general joint frame to develop the DRBM Plan/JPM (ICPDR SWMI Document, Annex 1). In relation to the national RBM Plans, the DRBM Plan/JPM addresses management needs at the basin-wide scale in order to achieve the respective WFD objectives.

The investigations, analysis and findings of the DRBM Plan and JPM at the basin-wide scale focus on:

- rivers with catchment areas >4000 km²⁸
- lakes with a surface area >100 km²
- transitional and coastal waters and
- transboundary groundwater water bodies with areas > 4000 km²

Visions and management objectives for each SWMI

The basin-wide approach influenced the development of visions and operational management objectives for each SWMI and groundwater to guide the Danube countries in preparing the DRBM Plan/JPM 2009. The visions and management objectives for each SWMI can be found in the ICPDR SWMI Document (Annex 1).

The SWMI visions are based on shared values and describe the principle objectives for the DRBD with a long-term perspective. The respective management objectives describe the first steps towards achieving the EU WFD environmental objectives by 2015 in the DRBD in an explicit way - they are

⁶ Water scarcity and droughts and the Green Paper adaptation of climate change will be discussed in the future in the light of the EU Communication.

⁷ 'Basin-district-wide' is cited as 'basin-wide' throughout the entire text of this document.

⁸ The scale for measure the collection of measures related to point source pollution is smaller and therefore more detailed.

less detailed than at the national WFD water body level and more detailed than expressed in the Danube River Protection Convention (DRPC) as well as in the Danube Declaration.

Overall, the visions and management objectives reflect the joint approach among all Danube Basin States and support the achievement of the EU WFD objectives in a very large, unique and heterogeneous European river basin.

Management objectives are individually defined for EU Member States, Non-EU Member States and the Accession Country Croatia when necessary.

2.7. The Joint Programme of Measures

The defined basin-wide visions and management objectives for each SWMI are the basis of the Joint Programme of Measures that summarises – as a consequence - agreed measures of basin-wide importance. The JPM measures of basin-wide importance are firmly based on and are coordinated with the national programmes of measures. A feedback mechanism from the basin-wide discussions into the national planning will ensure the integration of the international JPM into the national RBM Plans/PoMs. This integration should enable the implementation of measures coordinated on the basin-wide scale through the Danube countries and the achievement of the EU WFD objectives by 2015.

Special attention will be paid to the identification and implementation of priority measures and such measures with a lack of funding. Issues which emerge related to the financing of measures in some countries during the implementation of the JPM need to be followed up (e.g. the ICPDR will serve as the coordination and facilitation platform for informing and supporting the Danube countries to use and exploit appropriate European and international funding mechanisms).

3. Structure of the DRBM Plan

The structure of the DRBM Plan is based on the four Significant Water Management Issues (SWMIs) in the DRB plus groundwater and Annex VII of the EU WFD. The DRBM Plan follows a “top-down approach”, which means that the main document of the final DRBM Plan is intended to be a summary of aggregated information. In addition, the final DRBM Plan will include an extensive Annex providing all detailed (technical, analytical, etc.) information with respective references in the main summary text.

The Danube Basin Analysis 2004 is a basis for the DRBM Plan and will not be fully repeated in the text of the Plan. A summary of the main conclusions is part of chapter 2 of the DRBM Plan, which also highlights the Roof Report updates that have been performed since 2004. Details of the updates will be part of the Annexes.

Further, the DRBM Plan will include several thematic maps to illustrate key characteristics, findings and conclusions for the entire Danube River Basin.

As outlined below the DRBM Plan contains eight chapters plus a technical Annex.

1. Introduction

2. Setting the Scene

2.1. Development of the DRBM Plan

2.2. The Danube Basin Analysis – analytic basis for the DRBM

2.3. The Danube River Basin-Wide Scale

2.4. Overview of the Significant Water Management Issues of the DRB

3. Identified significant pressures in the DRBD

3.1 Surface Waters

Rivers/Transitional Waters/Coastal Waters

3.1.1 Organic pollution

3.1.2 Nutrient pollution

3.1.3 Hazardous substances pollution

3.1.4 Hydromorphological alterations

3.1.5 Other significant issues

Lakes

3.2 Groundwater

3.2.1 Groundwater quality

3.2.2 Groundwater quantity

4. Monitoring networks and ecological/chemical status

4.1 Surface Waters

4.1.1 TNMN in the DRBD

4.1.2 Joint Danube Survey 2

4.1.3 Confidence of status assessment

4.1.4 Ecological and chemical status of rivers/transitional waters/coastal waters

4.1.5 Ecological and chemical status of lakes

4.1.6. Gaps and uncertainties

4.2 Groundwater

4.2.1 TNMN in the DRBD

4.2.2 Confidence of the status assessment

4.2.3 Groundwater quality

4.2.4 Groundwater quantity

4.3 Final designation of Heavily Modified Water Bodies

4.4 Updated inventory of protected areas in the DRBD

5. Environmental objectives and exemptions

5.1. Management objectives for the DRBD and the WFD environmental objectives

5.2. Exemptions according to WFD Article 4(4), 4(5) and 4(7)

6. Economic analysis of water uses

7. Joint Programme of Measures

Surface Waters/

Rivers/Transitional Waters/Coastal Waters

7.1. Organic pollution

7.1.1 Visions and management objective

7.1.2 JPM approach toward the management objective

7.1.3. Summary of measures on the basin-wide scale

7.2. Nutrient pollution

7.2.1. Visions and management objective

7.2.2. JPM approach toward the management objective

7.2.3. Summary of measures on the basin-wide scale

7.3. Hazardous substances pollution

7.3.1. Visions and management objective

7.3.2. JPM approach toward the management objective

7.3.3. Summary of measures on the basin-wide scale

7.4. Hydromorphological alterations

7.4.1. Visions and management objective

7.4.2. JPM approach toward the management objective

7.4.3. Summary of measures on the basin-wide scale

Lakes

7.5. Groundwater

Groundwater quality

7.5.1. Visions and management objective

7.5.2. JPM approach toward the management objective

7.5.3. Summary of measures on the basin-wide scale

Groundwater quantity

7.5.4. Visions and management objective

7.5.5. JPM approach toward the management objective

7.5.6. Summary of measures on the basin-wide scale

7.6. JPM key conclusions - SWMIs and Groundwater

8. Water quantity issues and climate change

Annexes

4. DRBM Plan timeline, public consultation and status of the draft DRBM Plan

4.1. Milestones toward the final DRBM Plan/JPM

DRBM Plan/JPM data collection	May 2008 until Oct/Dec 2008
Data analysis for the DRBM Plan	October 2008 – April 2009
Outline of the DRBM Plan and JPM	December 2008
Draft DRBM Plan/JPM	Mid-May 2009
Public consultation process on the Draft DRBM Plan (including a stakeholder forum)	Mid-May – end June 2009
Final DRBM Plan/JPM	December 2009
Ministerial conference for the Danube countries	February 2010

The DRBM Plan timeline foresees – as required by the EU WFD - the final Plan and Joint Programme of Measures to be available in December 2009. The Plan should be finally discussed and endorsed on a preliminary basis at the 12th Ordinary Meeting of the ICPDR in December 2009. The final adoption should take place in the frame of a ministerial conference in February 2010 just before it will be sent to the European Commission in March 2010.

4.2. Public consultation for the DRBM Plan/JPM

As of the beginning of December 2008 significant national data for the DRBM Plan and JPM are not expected to be fully available for the basin-wide analysis and are still under preparation. These data will only be available at the end of December 2008. Therefore, the analysis of this information can only start in the beginning of 2009. The comprehensive Draft DRBM Plan and JPM will be completed by mid- May 2009.

This will be immediately followed by providing the draft DRBM Plan to the wider public for comments as an important milestone of the Danube basin-wide public consultation process that will last six weeks until the end of June 2009. The consultation will include opportunities to submit comments electronically and will be finishes with a basin-wide stakeholder forum end of June 2009. The public participation and consultation activities of the ICPDR regarding the DRBM Plan (time period 2008-2009) are outlined in a separate ICPDR document (see Annex 2).

The Danube states will launch the public consultation on the national RBM Plans and PoMs in December 2008, according to the WFD provisions. This public consultation will last six months and will therefore be finalised at the same time as the public consultation for the DRBM Plan (end-June 2009). As part of the national public consultation, and as required, the Danube states need to also report to and consult with the public about the international DRBM Plan.

This document should support and enable this task for the national level. The information on the DRBM Plan/JPM as part of the national public consultation ensures that the public is already fully informed about the principles of the DRBM Plan before the international public consultation will be launched mid-May 2009. The DRBM Plan will include all draft analyses, findings and recommendations of the JPM.

Overall, the combination of the national and international public consultation processes on the basin-wide scale ensures a comprehensive public consultation for the DRBM Plan/JPM as required by the WFD.

4.3. Status of the Draft DRBM Plan/JPM as of December 2008 and respective key issues as part of the draft DRBM Pan mid-May 2009

The draft DRBM Plan/JPM that will be available in mid-May 2009 will address surface waters and groundwater, include updates since the Danube Basin Analysis 2004 and clearly outline the measures of basin-wide importance as part of the JPM.

The following key issues can be expected as part of the draft DRBM Plan for mid-May 2009:

- Chapter 2 and Annex: Setting the scene (e.g. update of the typology of surface water bodies in the DRBD).
- Chapter 3: Identified significant pressures in the DRBD
 - Updated identification of significant pressures related to each SWMI and groundwater. For example:
 - Identification of significant point sources for nutrient, organic and hazardous substances pollution.
 - Updated analysis regarding the diffuse emission of nutrients in the DRB.
 - Comprehensive analysis regarding hydromorphological alterations in rivers related to the three components of longitudinal continuity interruption, lateral disconnection of wetlands/floodplains and hydrological modifications.
 - Hydromorphological assessment and pressures in the Danube River based on the results of the Joint Danube Survey 2.
 - List of future infrastructure projects in the DRB and possible applications of WFD article 4.7.
 - Lakes will be also addressed regarding their hydromorphological alterations.
- Chapter 4 – Monitoring programmes and ecological/chemical status
 - Description of the Transnational Monitoring Network in the DRB that has been adapted to the requirements of the WFD by end-2006.
 - Validation of the risk assessment of the Danube Basin Analysis 2004 through the presentation of the ecological and chemical status of surface waters and groundwater in the DRBD according to the requirements of the WFD including an updated risk assessment for the Non-EU Members States and the Accession Country Croatia.
 - Final designation of Heavily Modified Water Bodies based on a joint approach.
 - Updated inventory of protected areas.
- Chapter 5: Environmental objectives and exemptions
 - Illustration of water bodies that are subject to exemptions regarding WFD article 4.4 and 4.5.
- Chapter 6: Economic analysis of water uses
 - Updated economic analysis of water uses and economic considerations in relation to the DRB SWMIs.
- Chapter 7: The Joint Programme of Measures

The JPM will be the ‘heart piece’ of the management plan describing the measures of basin-wide importance and the effectiveness of national measures to achieve the defined management objectives at the Danube basin-wide scale.
- The JPM will include for each SWMI and groundwater:
 - Individual visions and management objectives for the Danube basin-wide scale,

- The general approach toward the management objectives and therefore the assessment of the effectiveness of national measures at the basin-wide scale. The description of the interlinkage between the JPM, significant pressures and the water body status will be included,
 - A summary of national measures of basin-wide importance,
 - Overview tables to make the JPM easily understandable, and
 - Selected lighthouse projects and toolboxes.
- o In the case that specific management objectives cannot be achieved by 2015, discussions on the implementation of further measures will need to be undertaken. Therefore, the DRBM Plan/JPM may result in specific conclusions and recommendations to jointly define the priority setting of measures at the basin-wide scale.
 - o **Chapter 8: Water quantity issues and climate change**
 - Outline focusing on water quantity issues in the DRB and the interlinkage of the DRBM Plan with flood management.
 - Existing findings regarding climate change and its impact on water resources in the DRBM providing an outlook for future steps that should be followed up in the DRBD.

5. Further information on national RBM Plans and the DRBD

As part of this chapter the competent authorities of the Danube States (according to WFD Article 3) and weblinks – as far as available - for the download of the national draft RBM Plans and Programmes of Measures are listed.

For further details on the Danube River Basin District, the download of material related to the development of the DRBM Plan and respective contact details, the ICPDR website can be consulted (www.icpdr.org).

Any comments on this Outline of the DRBM Plan (Part A basin-wide overview) should be sent to the competent authorities as listed in sub-chapter 5.1. Further, comments can be sent to the ICPDR Secretariat (icpdr@unvienna.org; Vienna International Centre / D0412, P.O. Box 500 / 1400 Vienna / Austria, Fax: +43 (1) 26060-5895).

5.1. List of competent authorities of the Danube States and weblinks for RBM Plans/PoMs

Austria

Federal Ministry for Agriculture, Forestry, Environment and Water Management

Stubenring 1
A-1012 Wien

Weblink:

<http://wisa.lebensministerium.at>

Bosnia i Hercegovina

Ministry of Foreign Trade and Economic Relations

Musala 9

BiH-71000 Sarajevo
and

Federal Ministry of Agriculture, Water Management and Forestry

Marsala Tita 15

BiH-71000 Sarajevo
and

Ministry of Agriculture, Forestry and Water Management of Republika Srpska

Milosa Obilica 51

BiH-76300 Bijeljina

Weblink:

www.mvteo.gov.ba

Bulgaria

Ministry of Environment and Water

22 Maria-Luisa Blvd.

BG-1000 Sofia

and

Danube River Basin Directorate

1, Vasil Levki str.

BG -5800 Pleven

Weblink:

www.dunavbd.org

Croatia

Ministry of Regional Development, Forestry and Water Management

Ulica grada Vukovara 220

HR-10000 Zagreb

Weblink:

Currently no weblink available

Czech Republic

Ministry of Environment

Vrsovicá 65

CZ-10010 Praha 10 and

Ministry of Agriculture

Tesnov 17

CZ-117 05 Praha 1

Weblink:

www.ochranavod.cz

www.mzp.cz

Germany

Bavarian State Ministry for Environment and Public Health

Rosenkavalierplatz 2

D-81925 München

Weblink:

www.wrrl.bayern.de and

Ministry for Environment Baden-Württemberg

Kernerplatz 10

D-70182 Stuttgart

Weblink:

www.wrrl.baden-wuerttemberg.de

Hungary

Ministry of Environment and Water

Fő utca 44-50

H-1011 Budapest

Weblink:

www.euvki.hu

Moldova

Ministry of Ecology, Construction and Territorial Development

9 Cosmonautilor St.

MD-2005 Chisinau

Weblink:

Currently no weblink available

Montenegro

Contracting party only since recently. Therefore, no detailed information available yet.

Romania

Ministry of Environment and Sustainable Development

12 Libertatii Blvd., Sector 5

RO-04129 Bucharest

and

National Administration "Apele Romane"

6 Edgar Quinet St., Sector 1

RO-010018 Bucharest

Weblink:

www.mmediu.ro/departament_ape/gospodarirea_apelor/directiva_cadru.ht

www.rowater.ro/#/Consultarea%20publicului

Serbia

Ministry of Agriculture, Forestry, and Water Management

Nemanjina 22-26

RS-11000 Beograd

Weblink:

Currently no weblink available

Slovak Republic

Ministry of the Environment

Námestie L' Stúra 1

SK-81235 Bratislava

Weblink:

www.enviro.gov.sk/servlets/page/868?c_id=5384

Slovenia

Ministry of the Environment and Spatial Planning

Dunajska 48

SI-1000 Ljubljana

Weblink:

www.mop.gov.si/si/javne_objave/vabila_k_sodelovanju_splosno

Ukraine

Ministry for Environmental Protection of Ukraine

35, Uritskogo str.

UA-03035 Kyiv

and

State Committee of Ukraine for Water Management

8, Chervonoarmiyska Str.

UA-01601 Kyiv

Weblink:

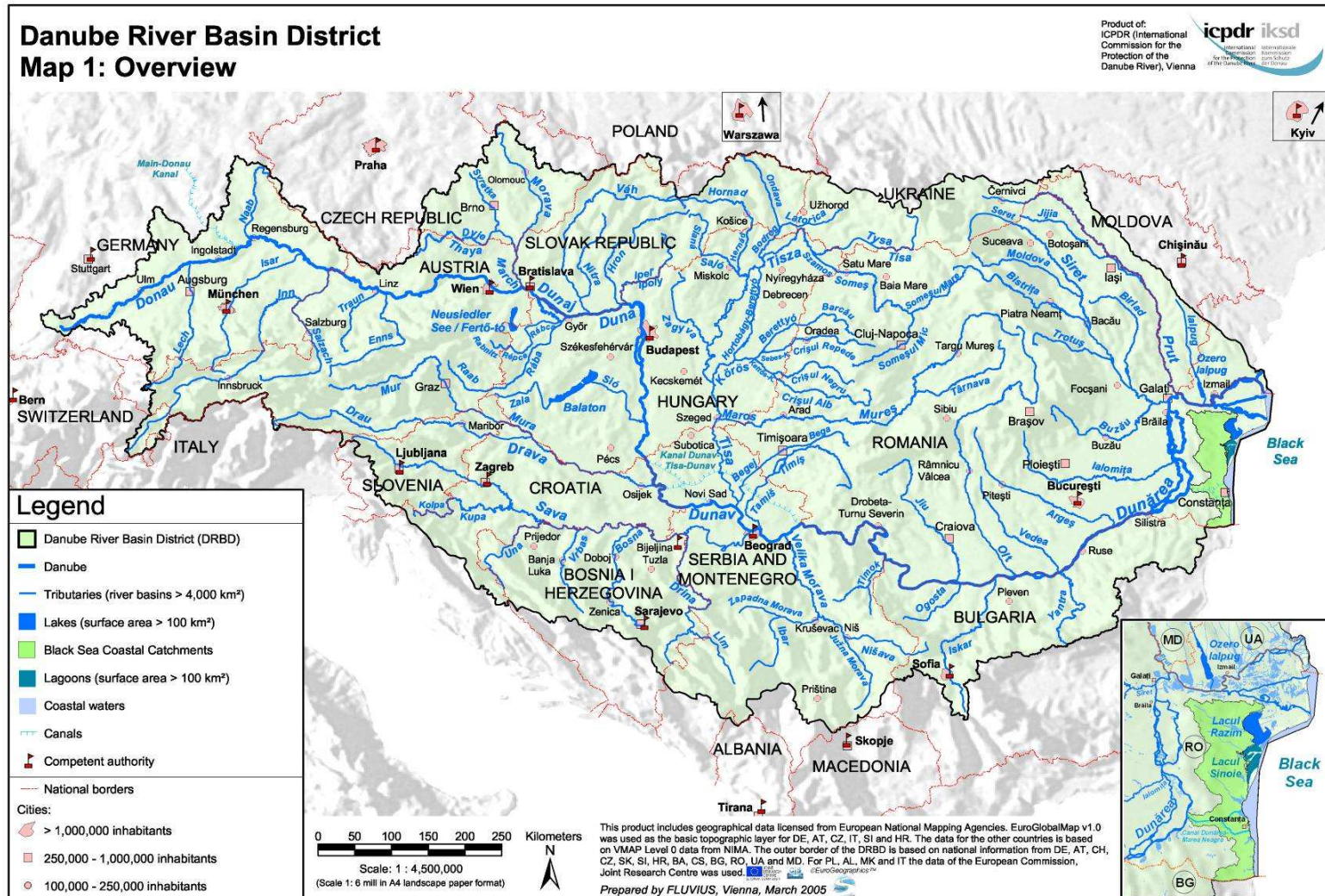
www.menr.gov.ua

6. Annexes

Annex 1 – SWMI document

Annex 2 – Document on public participation and consultation in the DRBD

Map 1: Overview map of the Danube River Basin District.



ADATLAP

a Vízgyűjtő-gazdálkodási tervek készítése” című KEOP 2.5.0 projekt keretében működtetett
VIZEINK.HU honlapon történő dokumentumok publikálásához

1. A beküldő szervezet neve:

ÖKO Zrt. vezette Konzorcium

1.1. Kontakt személy:

Dr. Rákosi Judit

1.2. Telefonszám:

+36 1 2126093

1.3. E-mail:

rakosi.judit@oko-rt.hu

2. A dokumentum címe:

Outline of the Danube River Basin District Management Plan

2.1. A dokumentum típusa:

háttéranyag

2.2. A dokumentum státusza:

végleges

2.3. A dokumentum verziószáma:

2.4. A dokumentum zárásának időpontja:

2008.12.22.

2.5. A publikálás kezdete:

2008.12.22.

2.6. A publikálás vége:

2009.12.22.

3. A dokumentum helye a tervezési rendszerben:

országos

regionális

helyi

4. Kulcsszavak:

angol, management plan, Danube, Duna

5. Egyéb fontos kérés a honlapon történő publikációval kapcsolatban:

nincs

Amennyiben az adatlap kitöltésével kapcsolatban kérdése merül fel, kérjük írjon a vizeink@respect.hu címre!